

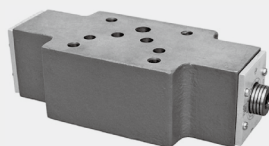


4.6

Double Throttle/ Check Valve

Type Z2FS6, 10, 16, 22...30

Sizes 6, 10, 16, 22
Up to 350bar
Up to 360 L/min



Contents

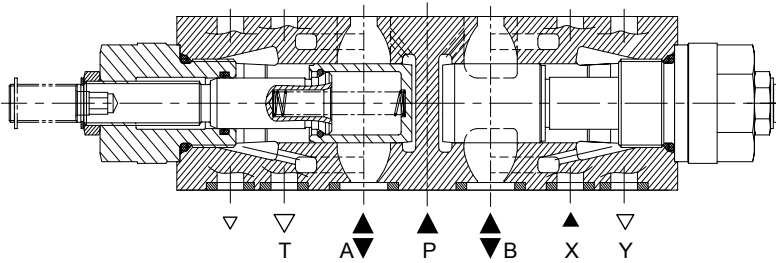
Function and configurations	02
Symbols	02-03
Ordering code	04
Technical data	04
Characteristic curves	05
Unit dimensions	06-07

Features

- Sandwich plate valve
- Porting pattern to DIN 24 340 form A and ISO4401
- For limiting the main or control fluid flow of 2 actuator connections
- 3 adjustment elements:
 - Lockable rotary knob with scale
 - Spindle with internal hexagon and scale
 - Rotary knob with scale
- For meter-in or meter-out control

Function and configuration

Valve type Z2FS is a double throttle/check valve with sandwich plate structure. It is used to control the flow by changing the throttling. In the opposite direction, fluid flows freely through the check valve. For Z2FS10, depending on the installation position, the throttling effect may be arranged as a meter-in or a meter-out control. While for Z2FS16 and 22, depending on the model (S or S2) throttling may take place in either meter-in or meter-out, and at the same time the two operating oil chambers are connected.

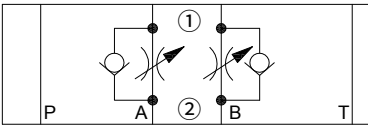


Structure chart of double throttle/Check Valve

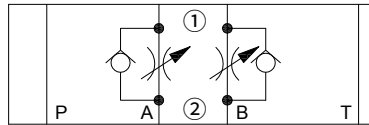
Symbols (① = valve side, ② = sub-plate side)

size:6

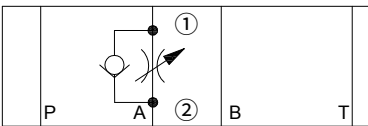
Type:Z2FS6-30/ (meter-in control)



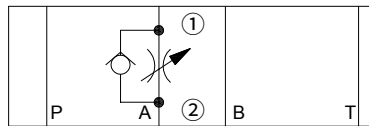
Type:Z2FS6-30/ (meter-out control)



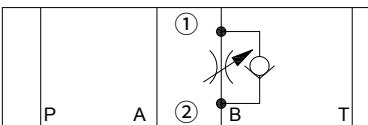
Type:Z2FS6A-30/ (meter-in control)



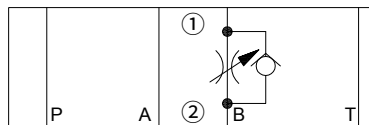
Type:Z2FS6A-30/ (meter-out control)



Type:Z2FS6B-30/ (meter-in control)

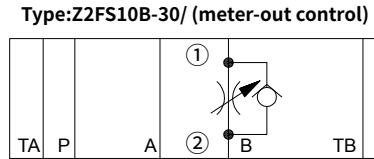
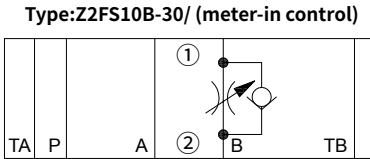
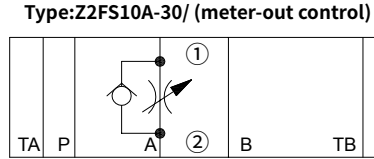
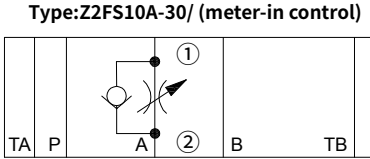
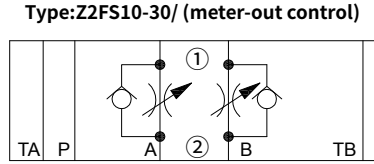
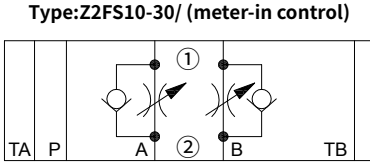


Type:Z2FS6B-30/ (meter-out control)



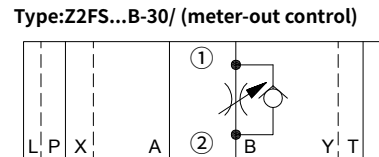
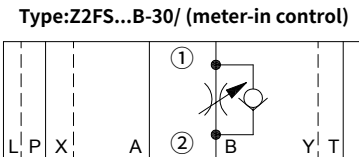
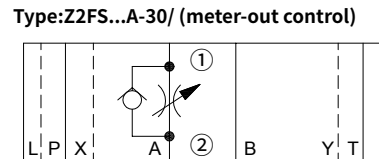
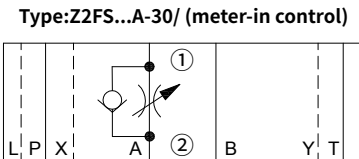
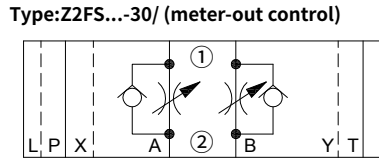
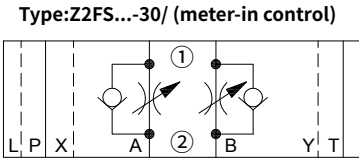
Symbols (① =valve side, ② = sub-plate side)

size:10



Symbols (① =valve side, ② = sub-plate side)

size:16, 22



04

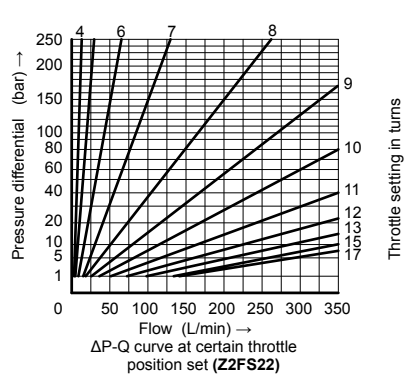
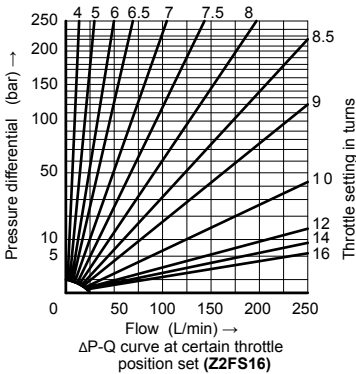
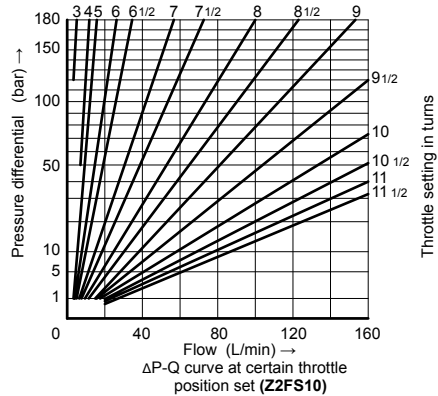
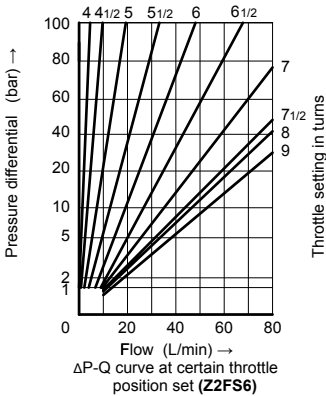
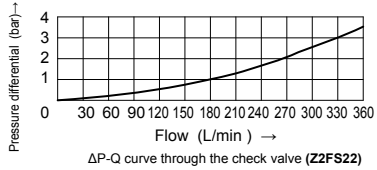
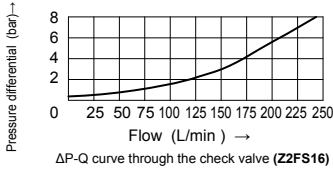
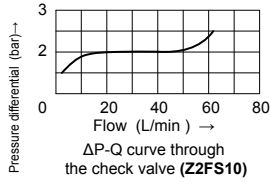
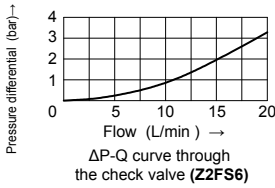
Ordering code

Z2FS		30		★	
Double throttle/ check valve				Further details in clear text	
Nominal size 6	=6			No code =	NBR seals
Nominal size 10	=10			V =	FKM seals
Nominal size 16	=16				
Nominal size 22	=22			No code=	Meter-in /meter-out control
Throttle/check valve ports A and B = -				S =	Meter-in contro
Throttle/check valve port A = A				S2 =	Meter-out control
Throttle/check valve port B = B				Note: overturning the Z2FS10 by 180° the throttling effect can be arranged as a meter-in or meter-out control.	
L30 Series		=30			

Technical data

Installation position	Optional
Flow direction	One direction throttle, return through the check valve by another direction
Fluid	Mineral oil suitable for NBR and FKM seal, Phosphate ester for FKM seal
Fluid temperature range	°C -20 to +80
Degree of contamination	Maximum permissible degree of fluid contamination: Class 9. NAS 1638 or 20/18/15, ISO4406
Viscosity range	mm ² /s 10 to 800
Max.operating pressure	bar to 350
Nominal size	6 10 16 22
Weight	kg 0.9 3.1 4.7 8

Characteristic curves (Measured at $\vartheta_{oil} = 40^{\circ}C \pm 5^{\circ}C$, using HLP46)

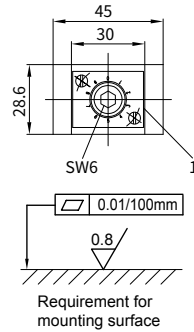
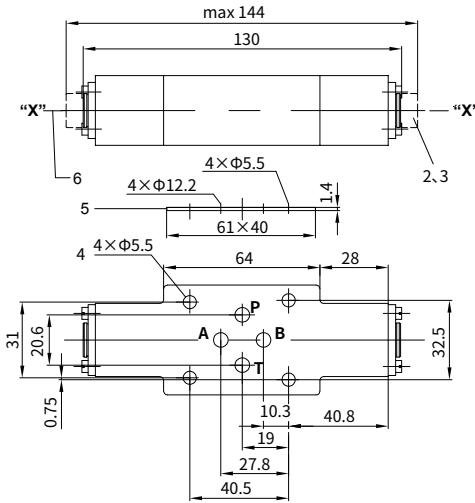


04

Unit dimensions:

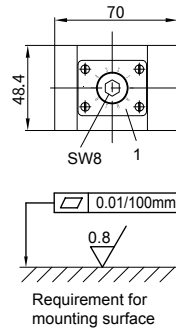
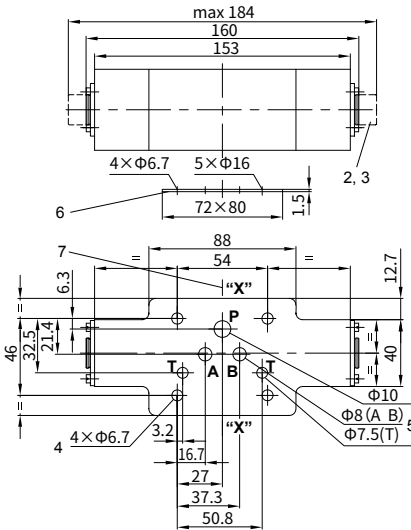
(Dimensions in mm)

• Outline dimension of double throttle/Check Valve Type Z2FS6



- 1 Nameplate
- 2 Adjustable bolt
- 3 Turn anti-clockwise=increases flow, turn clockwise=decreases flow
- 4 Valve fixing holes
- 5 O-ring plate
- 6 To change from meter-in to meter-out, rotate the unit around the "X - X" axis

• Outline dimension of double throttle/Check Valve Type Z2FS10

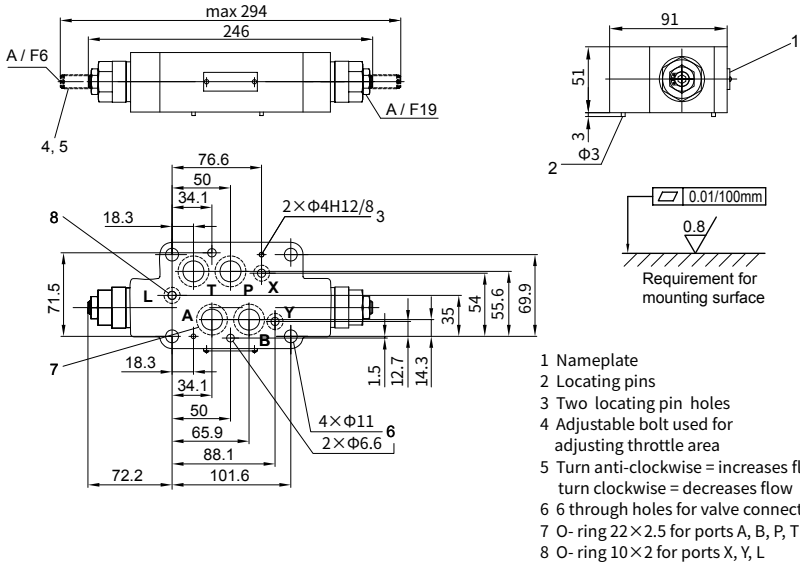


- 1 Nameplate
- 2 Adjustable bolt
- 3 Turn anti-clockwise = increases flow, turn clockwise = decreases flow
- 4 Valve fixing holes
- 5 Port (A, B, P, T)
- 6 O-ring plate
- 7 To change from meter-in to meter-out, rotate the unit around the "X - X" axis

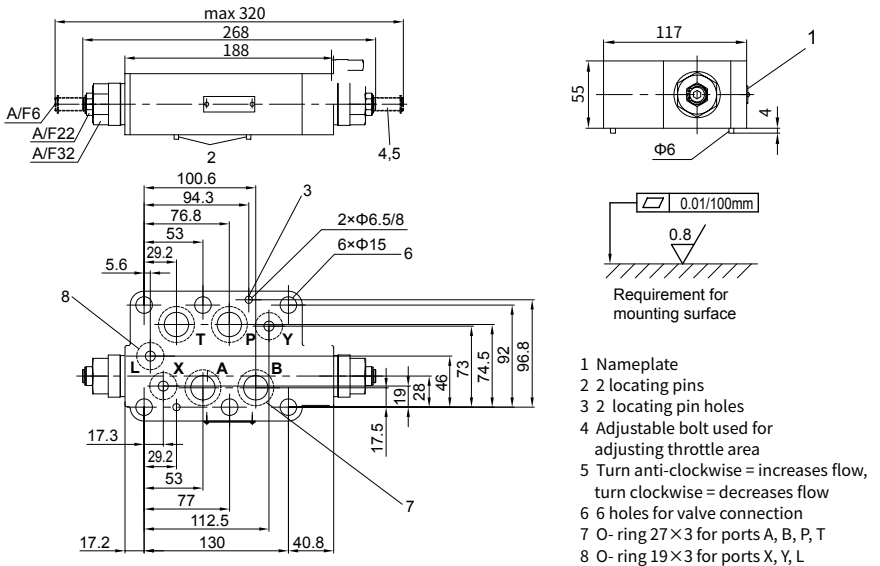
Unit dimensions:

(Dimensions in mm)

• Outline dimension of double throttle/Check Valve Type Z2FS16



• Outline dimension of double throttle/Check Valve Type Z2FS22



China

+86 400 101 8889

America

+01 630 995 3674

Germany

+49 172 3683463

Japan

+81 03 6809 1696



© This brochure can be reproduced, edited, reproduced or transmitted electronically without the authorization of Hengli Hydraulic Company. Due to the continuous development of the product, the information in this brochure is not specific to the specific conditions or applicability of the industry, thus, Hengli does not take any responsibility for any incomplete or inaccurate description.