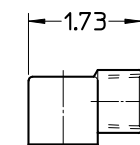
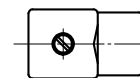
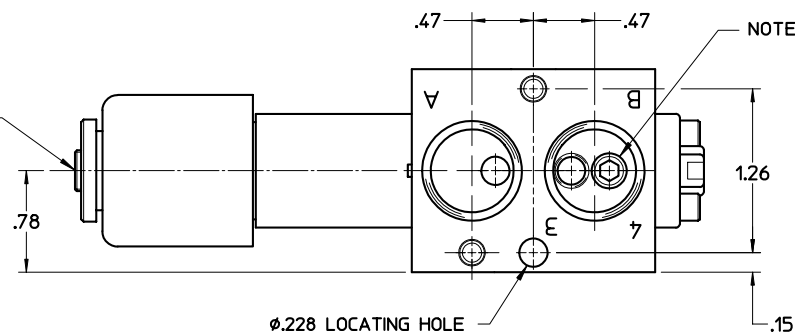
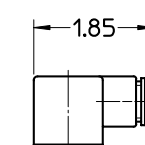
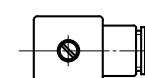


M5 x .20 DEEP THREADED SOLENOID EXHAUST PORT

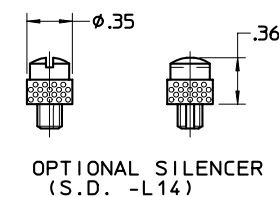
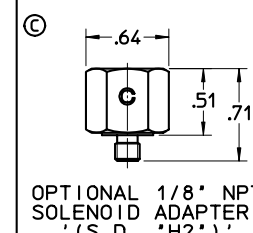


SOCKET WITH 1/2 N.P.T. CONDUIT CONNECTION



SOCKET WITH PG-9 CORD GRIP


### SOCKET OPTIONS



- NOTES:** 1) DRAWING SHOWS PRODUCT'S PHYSICAL CHARACTERISTICS ONLY. PERFORMANCE PARAMETERS ARE CONTAINED ON PRODUCT SPECIFICATION SHEETS.  
2) S.A.E. PORT MARKINGS SHOWN. I.S.O. FORMAT USED ON METRIC PORTED VALVES.  
3) PRODUCT SUPPLIED AS STANDARD WITH PG-9 SOCKET ASS'Y (SEE SOCKET OPTION BOX).

C	KF 4-24-07	ADDED L14 AND H2 OPTIONS TO	13963
	NG 4-26-07	DRAWING	AP 4-27-07
B	AP 05-14-02	REDESIGNED SOLENOID CAP AND ALL	10526B
	RGM 05-14-02	MANUAL OVERRIDE OPTIONS. THE STANDARD WAS PUSH TURN TO LOCK.	BN 06-07-02
LTR	REV'D/CK'D BY	DESCRIPTION	EWB NO/APP'D BY
REVISION LEVEL			

DRAWN BY RGM 11-25-96	CHECKED BY JMC 2-18-97	ENG APP'D MJR 02-20-97	ORIG EWR 9918	TITLE VALVE ASSY - SINGLE SOLENOID OPERATED, INTRINSICALLY SAFE, SPR. RETURN, SERIES 'C5' 'NAMUR'
MATL	SCALE 1:1	NEXT ASSY	DWG SIZE B	
HARDNESS	UNLESS OTHERWISE SPECIFIED			
HEAT TREAT	2 PLACE DECIMAL ±.010 ANGULAR DIMENSIONS ±1/2°			
2	3 PLACE DECIMAL ±.003 BREAK CORNERS & EDGES .010 DIA'S ON SAME CENTERLINE CONCENTRIC WITHIN .006 T.I.R. MACHINED SURFACES, FINISHED TO 64 R.M.S. MAX.			
BY	DO NOT SCALE DRAWING			
FINAL FINISH	THIS DRAWING IS CAD GENERATED AND THE PROPERTY OF VERSA PRODUCTS CO. INC. USE AND/OR REPRODUCTION OF ANY PORTION MUST BE WITH THE APPROVAL OF VERSA			



VERSA PRODUCTS CO. INC.  
PARAMUS N.J., U.S.A.  
VERSA BV, NETHERLANDS

DWG. NO.

GC5-0207

VERSA PRODUCTS CO. INC.  
PARAMUS N.J., U.S.A.  
VERSA BV, NETHERLANDS

DWG. NO.

GC5-0207