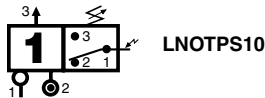
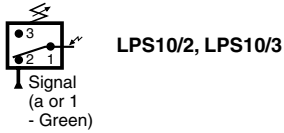


With Electrical, Electrical & Pneumatic and Pneumatic Output

**Electrical Pressure Switch
 Without Subbase**

For Mounting On Any 2 or 3-Port Base



LPS10*

Part Number	Description
LPS10/2	1.5 to 30 PSIG Adjustable Senses Presence of Air Pressure to provide Electrical Switching
LPS10/3	10 to 100 PSIG Adjustable Senses Presence of Air Pressure to provide Electrical Switching
LNOTPS10	Senses Absence of Air Pressure, Provides Electrical and Pneumatic Switching

Units supplied with 3 crimp-on electrical terminals with insulators.

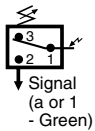
Electrical Characteristics

5A / 250V, 1 N.O. or 1 N.C. (SPDT) Contact

Terminal Number	Description	
	LPS10	LNOTPS
1	Common	Common
2	Normally Passing	Normally Non-Passing
3	Normally Non-Passing	Normally Passing

Vacuum Switch

For Mounting On Any 2 or 3-Port Base



LPSV10

Part Number	Description
LPSV10	Senses Presence of Vacuum

Units supplied with 3 crimp-on electrical terminals with insulators.

Electrical Characteristics

5A / 250V, 1 N.O. or 1 N.C. (SPDT) Contact

Terminal Number	Description
1	Common
2	Normally Non-Passing
3	Normally Passing

Cable



7097J03711

Part Number	Description
7097J03711	Optional for LPS10 / LPSV

Terminal Number	Wire Color
1	Brown
2	Blue
3	Black

Specifications

LPS & LPSV

Air Quality

Standard Shop Air, Lubricated or Dry,
 40 µm Filtration

Degree of Protection

IP40 with Molded Connector

Depilot Pressure

Differential less than 25% of
 maximum range

Electrical Connection

Spade Connectors or Molded Cable

Function

SPDT Contacts (NO or NC)

Insulation Voltage Rating

250V AC or DC

Materials

- Body Polyamide
- Poppet Acetal
- Seals Nitrile (Buna N)

Maximum Operating Frequency

2 Hz

Mechanical Life

10 Million Operations

Mounting

2 or 3-Port Subbase

**Number of Operations with Dry Air
 at 90 PSI and 70°F – Frequency 1 Hz**

10 Million

Operating Positions

All Positions

Operating Pressure

115 PSIG (8 bar Max.)

Rated Current

5A (3A with 7097J03711 Cable)

Temperature

Operating
 32°F to 122°F (0°C to +50°C)

Storage

-22°F to 140°F (-30°C to +60°C)

Trip Pressure

LPS10/2 - 1.5 to 30 PSI (0.1 to 2 bar
 Adjustable

LPS10/3 - 10 to 100 PSI (0.7 to 7 bar
 Adjustable



Specifications

LNOTPS

Air Quality

Standard Shop Air, Lubricated or Dry,
 40 µm Filtration

Cv

0.19 (2.4)

Degree of Protection

IP40 with Molded Connector

Depilot Pressure

7% of Supply Pressure

Electrical Connection

Spade Connectors or Molded Cable

**Flow rate at 90 PSI (6 bar) in SCFM
 (l/mn ANR)**

9.3 (262)

Function

SPDT Contacts (NO or NC)

Insulation Voltage Rating

250V AC or DC

Materials

- Body Polyamide
- Poppet Acetal
- Seals Nitrile (Buna N)

Mechanical Life

10 Million Operations

Mounting

3-Ported Subbase

**Number of Operations with Dry Air
 at 90 PSI and 70°F – Frequency 1 Hz**

10 Million

Operating Positions

All Positions

Operating Pressure

40 to 115 PSIG (3 to 8 bar)

Rated Current

5A (3A with 7097J03711 Cable)

Temperature

Operating
 32°F to 122°F (0°C to +50°C)

Storage

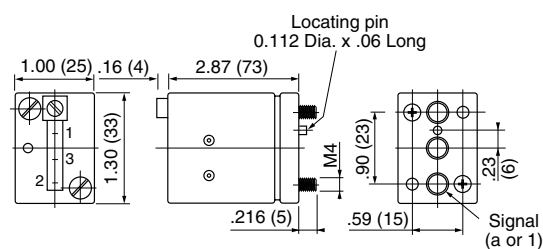
-22°F to 140°F (-30°C to +60°C)

Trip Pressure

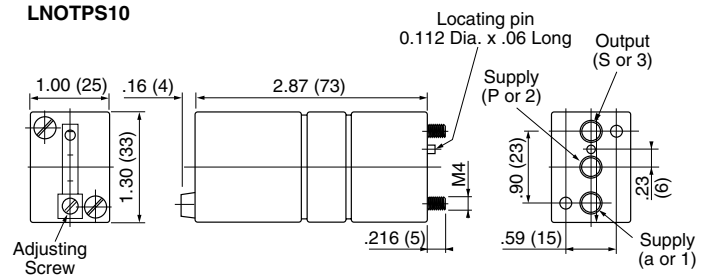
36% of Supply Pressure

Dimensions

LPS10 / LPSV10



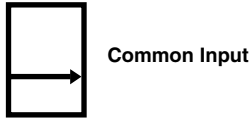
LNOTPS10



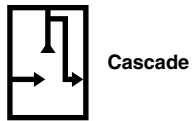
For Mounting Logic Elements And Relays

3-Port Subbases

With 5/32" Instant Swivel Connections, Pressure Indicators and Integral Lock for Stacking



PZUA12

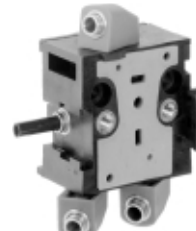


PZUC12

Part Number	Description
PZUA12	Common Input
PZUC12	Cascade

4-Port Subbases

With 5/32" Instant Swivel Connections, Pressure Indicators and Integral Lock for Stacking

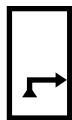


PZUB12

Part Number	Description
PZUB12	Common Input

Entry Module

With Integral Lock for Stacking



PZUE12

Part Number	Description
PZUE12	Relay Entry Module (Used with PZUA12, PZUB12 and PZUC12 Bases

Specifications

Materials

Polyamide and Brass

Ports

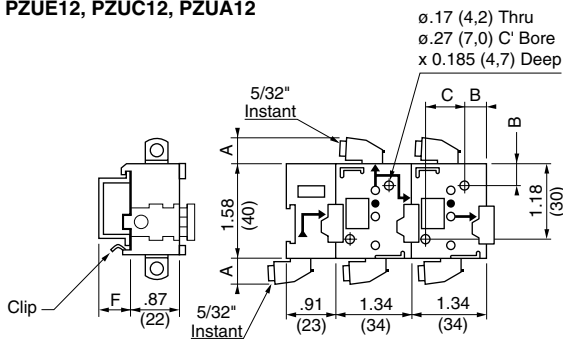
5/32" Instant for Semi- Rigid Nylon or Polyurethane Tube

Notes:

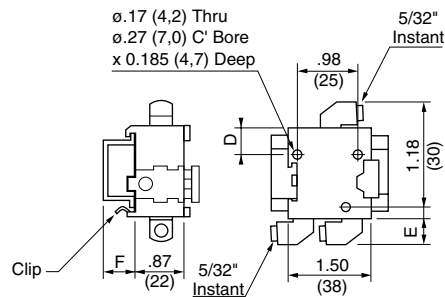
1. Can be used as individual units or in stacking assemblies.
2. May be DIN rail mounted using spring clip or surface mounted using 2 socket head cap screws.
3. PZUA12, PZUB12 and PZUC12 can be mounted together in the same assembly.
4. Units interconnect with 5/32" Tube. For replacement use 1" (25mm), 5/32" semi-rigid nylon or polyurethane.

Dimensions

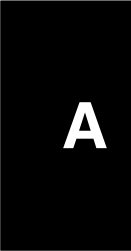
PZUE12, PZUC12, PZUA12



PZUB12



	inch	mm
A	.55	14
B	.39	10
C	.59	15
D	.47	12
E	.20	5
F	.59	15



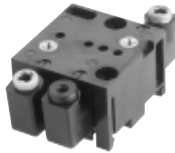
Independent Bases



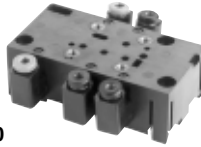
BNC3P10



BPB3P10



BIC3P10



BIC7P10

Part Number	Description	# of Ports
BNC3P10	1/8" NPT, Individual Mount	3
BPB3P10	5/32" Instant Fitting*, Machine Mount	3
BIC3P10	5/32" Instant Fitting*, DIN Rail Mount	3
BIC7P10	5/32" Instant Swivel Fitting*, DIN Rail Mount for MEM7P10	5

* Use Semi- Rigid Nylon or Polyurethane Tube

Independent 2-Port Pulse Bases



BNC3P20



BPB3P20

Part Number	Description
BNC3P20	1/8" NPT, Port 1 and 2 Common
BPB3P20	5/32" Instant Fitting*, Machine Mount, Port 1 and 2 Common

* Use Semi- Rigid Nylon or Polyurethane Tube

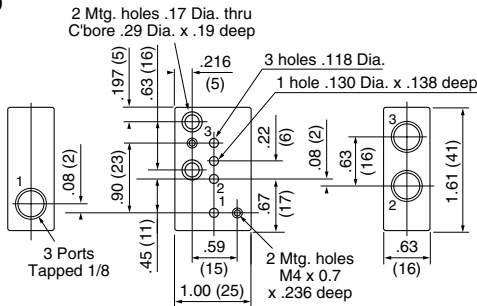
Specifications

Materials

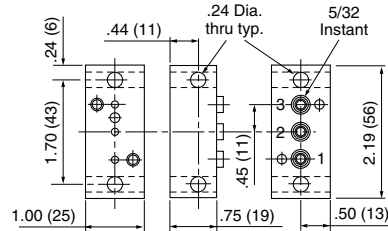
BIC Units Polyamide and Brass
 BNC Units Plated Zinc
 BPB Units Aluminium

Dimensions

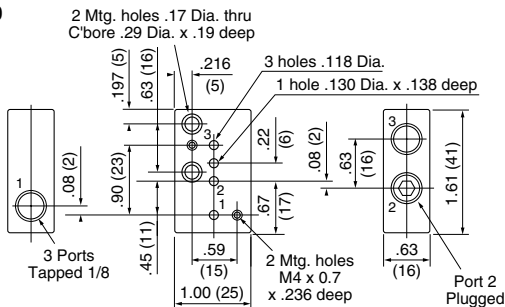
BNC3P10



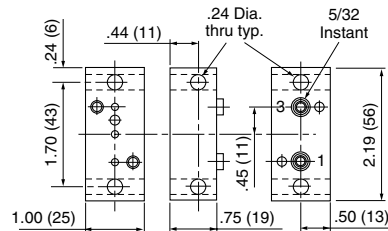
BPB3P10



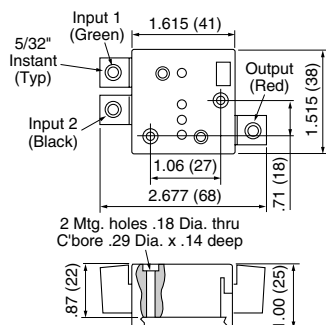
BNC3P20



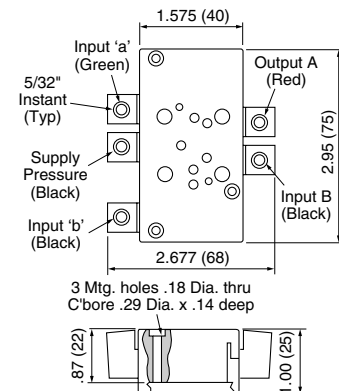
BPB3P20



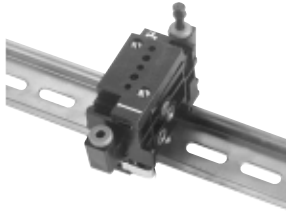
BIC3P10



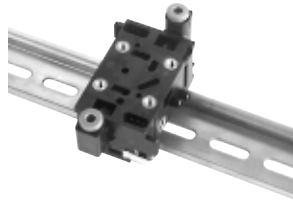
BIC7P10



Polylog Manifold Mounting Base



BAC3P10



BAC7P10

Part Number	Description
BAC3P10*	3-Port Modular Base, 5/32" Instant Swivel Fitting, DIN Rail Mount
BAESP20	End Plate Kit 2 Pieces - Supply Base and Output Base
BAC7P10*	5/32" Instant DIN Rail Base, 5-Port Modular Base For MEM7P10. Use with BAESP20 End Plates

* BAC3P10 and BAC7P10 can be assembled in the same manifold assembly

Conversion Kits



LT10/PUL



PI23P10

Pulse Conversion Kit

Part Number	Description
LT10/PUL	Converts a 3-Port Base into a 2-Port Base - Combines Ports P and a or 1 and 2

Unit ships with (2) 40mm long screws for use with LTY, LTN, LPG and LFPUL10/0.5. For additional screws, see Spare Parts at the end of this Section.

Specifications

Materials

Polyamide and Brass

Ports

All are 5/32" Instant except for supply on BAESP20 which is 1/4" Instant. Use Semi- Rigid Nylon or Polyurethane Tube

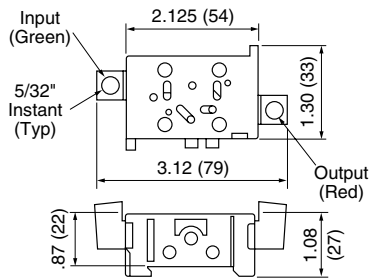
Port Inverter

Part Number	Description
PI123P10	Inverts Ports 1 or a and 2 or P
PI233P10	Inverts Ports 2 or P and 3 or S

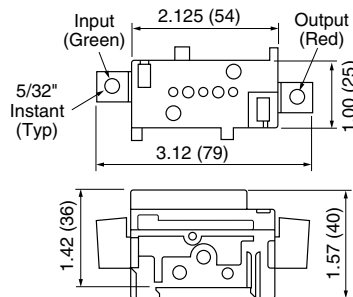
Includes threaded screw extensions.

Dimensions

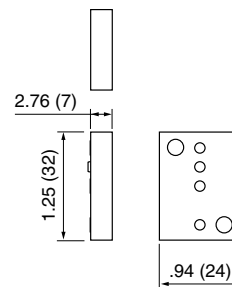
BAC3P10



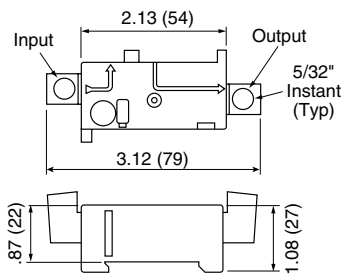
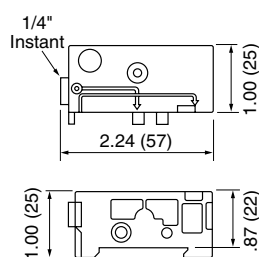
BAC7P10



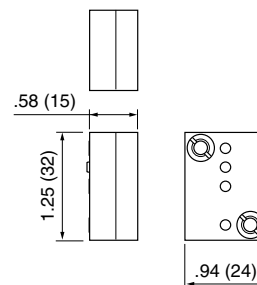
LT10/PUL



BAESP20



PI123P10, PI233P10



Base Usage - Shows which components can be mounted with which base types.

Element	Part No.	Base Description / Part Number					
		Type	2-Port	3-Port	4-Port	5-Port	6-Port
		Stacking		PZUA12	PZUB12	BAC7P10	PSBA12
		Stacking		PZUC12			
		Stacking		BAC3P10			
		Inline	BNC3P20	BNC3P10		BIC7P10	
		Inline	BPB3P20	BPB3P10			
		Inline		BIC3P10			
Step Module							
Step Module w/Overrides	PSMA10						X
Step Module w/o Overrides	PSMB10						X
Logic							
AND	PLLC10			X			
OR	PLKC10			X			
YES	PLJC10			X			
NOT	PLNC10			X			
Threshold NOT	PLND10			X			
Relays							
Sensor	PRFA10			X			
Solenoid	PRSA10		X	X			
Signal Amplifier	LFAY10			X			
Electric Pressure Switch	PREA10		X	X			
E/P Pressure Switch	LNOTPS10			X			
Electric Pressure Switch	LPS10		X	X			
Vacuum/Electric	LPSV10		X	X			
Pneumatic/Pneumatic	LAAY10			X			
Pneumatic/Pneumatic	LAAN10			X			
Timers							
Timer (NNP) Relay	PRTA10		X*	X			
Timer (NNP) Relay	PRTB10		X*	X			
Timer (NNP) Relay	PRTE10		X*	X			
Timer (NP) Relay	PRTC10		X*	X			
Timer (NP) Relay	PRTD10		X*	X			
Timer (NP) Relay	PRTF10		X*	X			
Timer (NNP) Relay	LTY10		X*	X			
Timer (NP) Relay	LTN10		X*	X			
Other Relays							
Memory Relay	PLMA10				X		
Amplifier Relay	PRDA10				X		
Valves							
4 Way Valve	MEM7P10					X	
Pulse Generators							
Pulse Generator Fixed	LPG10		X	X**			
Pulse Generator Variable	LFPUL		X	X**			
Accessories							
Air Pressure Regulator	PRD3P10		X	X			
Flow Control (Fine)	TR3P10		X	X			
Flow Control (Single Turn)	FR3P10		X	X			

* Functionality must be checked

** Must be used with LT10/PUL

Port	Label		Color
Supply	P	2	Black/None
Signal	a	1	Green
Output	S	3	Red

Used With Base	Entry Module	End Plate	Head / Tail
	PZUE12	BAE3SP20	PSEA127
	PZUA12	BAC3P10	PSBA12
	PZUC12	BAC7P10	
	PZUB12		

CAUTION: The logic and relay units shown on the right can be improperly assembled to the bases shown on the left. For proper assembly, the locators shown should be oriented towards port 3 on the subbases.

