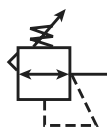


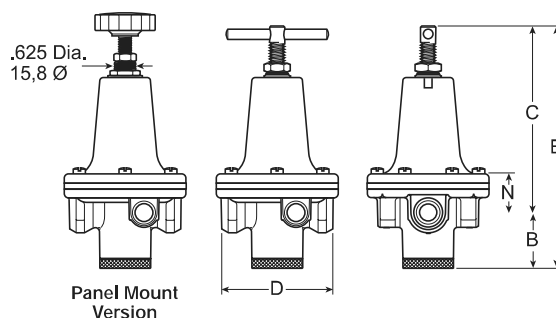
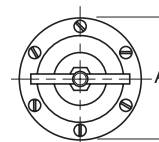
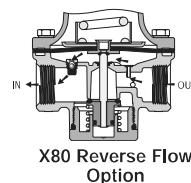
## R119 Standard Regulators

B



### Features

- High Flow Performance Featuring Rugged Design for the Most Demanding Applications
- Ideal for Those Installations Calling for Constant Pressure with Wide Variation in Flow
- Diaphragm Operated Design with Balanced Poppet Design for Quick and Accurate Regulation
- Secondary Aspiration Plus Balanced Poppet Provides Quick Response and Accurate Pressure Regulation
- Heavy Duty Tee Handle Adjustment
- Reverse Flow Version Available
- Panel Mount Version Available
- High Flow: 1/4" - 100 SCFM<sup>§</sup>  
3/8" - 110 SCFM<sup>§</sup>  
1/2" - 150 SCFM<sup>§</sup>



Port Size	NPT Relieving	BSPP Relieving
<b>Without Gauge 0-125 PSIG Reduced Pressure</b>		
1/4"	<b>R119-02C</b>	R119G02C
3/8"	<b>R119-03C</b>	R119G03C
1/2"	<b>R119-04C</b>	R119G04C
<b>With Gauge 0-125 PSIG Reduced Pressure</b>		
1/4"	<b>R119-02CG</b>	—
3/8"	<b>R119-03CG</b>	—
1/2"	<b>R119-04CG</b>	—

R119 Regulator Dimensions					
A	B	C	D	E	N
<b>R119-02C, R119-03C</b>					
3.00 (76)	1.38 (35)	4.60 (117)	2.74 (70.5)	5.98 (152)	0.96 (24)
<b>R119-04C</b>					
3.56 (90)	1.56 (40)	5.20 (132)	3.25 (83)	6.76 (172)	1.27 (32)

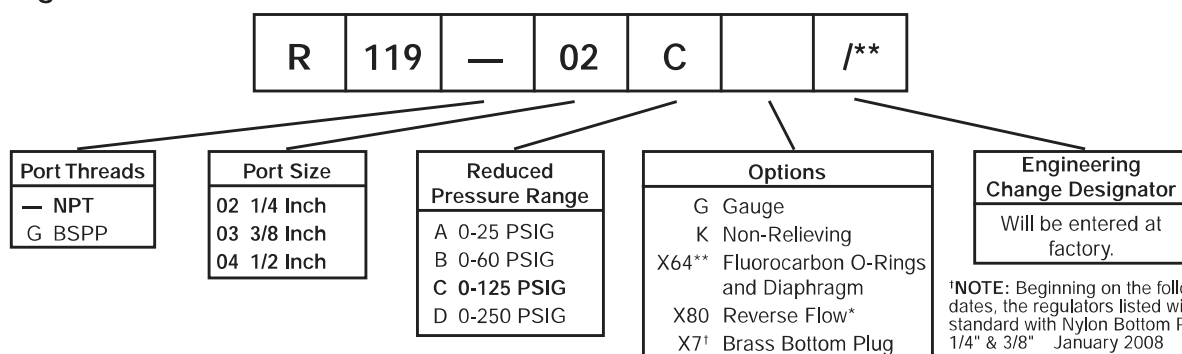
inches  
(mm)

**Bold Items are Most Popular.**

For other models refer to ordering information below.

§ SCFM = Standard cubic feet per minute at 100 PSIG inlet, 75 PSIG no flow secondary setting, and 20 PSIG pressure drop.

## Ordering Information



<sup>†</sup>NOTE: Beginning on the following dates, the regulators listed will come standard with Nylon Bottom Plugs.  
1/4" & 3/8" January 2008  
1/2" March 2008

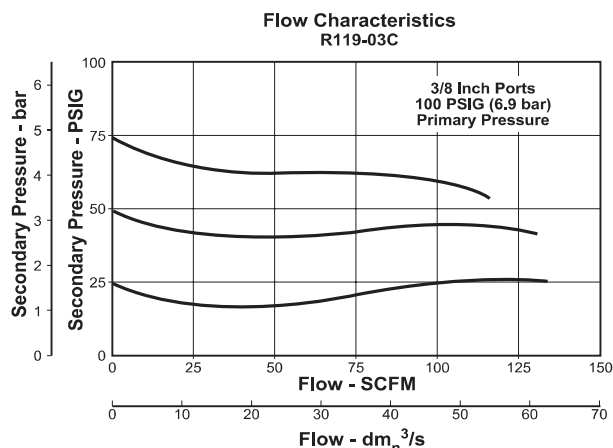
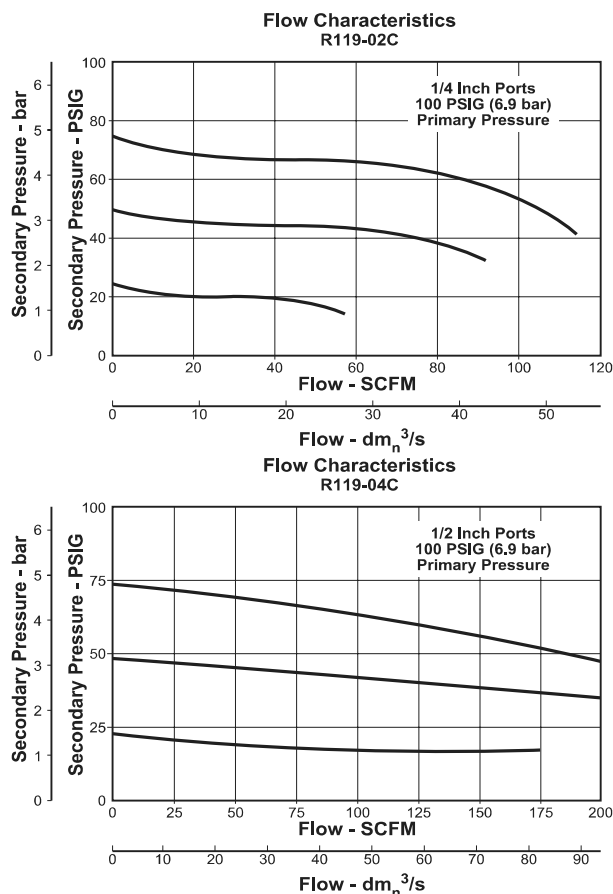
\* Reverse flow for use downstream of control valves.

\*\* Brass Bottom Plug Standard with X64 Option.

**BOLD ITEMS ARE MOST POPULAR.**



## Technical Information



### ⚠ WARNING

Product rupture can cause serious injury.  
 Do not connect regulator to bottled gas.  
 Do not exceed maximum primary pressure rating.

### ⚠ CAUTION:

**REGULATOR PRESSURE ADJUSTMENT** – The working range of knob adjustment is designed to permit outlet pressures within their full range. Pressure adjustment beyond this range is also possible because the knob is not a limiting device. This is a common characteristic of most industrial regulators, and limiting devices may be obtained only by special design. For best performance, regulated pressure should always be set by increasing the pressure up to the desired setting.

## R119 Regulator Kits & Accessories

### Gauges –

2" Dial Size, 1/4" Back Connection 0 to 60 PSIG (0 to 400 kPa)	K4520N14060
2" Dial Size, 1/4" Back Connection 0 to 160 PSIG (0 to 1100 kPa)	K4520N14160
2" Dial Size, 1/4" Back Connection 0 to 300 PSIG (0 to 2068 kPa)	K4520N14300

### Mounting Bracket Kit –

1/4", 3/8"	SA15Y57
1/2"	18A57

### Panel Mount Conversion Kit –

1/4", 3/8"	4202
1/2"	4204

### Repair Kits –

Non-Relieving Diaphragm, Valve Assembly (1/4", 3/8"; All PSIG)	RK118Y
Relieving Diaphragm, Valve Assembly (1/4", 3/8"; All PSIG)	RK119Y
Non-Relieving Diaphragm, Valve Assembly (1/2"; 25, 60, 125 PSIG)	RK118A
Non-Relieving Diaphragm, Valve Assembly (1/2"; 250 PSIG)	RK118A250
Relieving Diaphragm, Valve Assembly (1/2"; 25, 60, 125 PSIG)	RK119A

Relieving Diaphragm, Valve Assembly (1/2"; 250 PSIG)	RK119A250
---	-----------

For Fluorocarbon Repair Kits, add X64 to Kit Number suffix.

## Specifications

Gauge Ports (2)	1/4 Inch
Port Threads	1/4, 3/8, 1/2 Inch
Reduced Pressure Range	2 to 125 PSIG (0.15 to 8.5 bar)
Supply Pressure	300 PSIG Maximum (20.4 bar)
Temperature Rating	40°F to 125°F (4.4°C to 52°C)
Weight –	
R119-02, R119-03	1.8 lb. (0.82 kg) / Unit 26 lb. (11.79 kg) / 12-Unit Master Pack
R119-04	3.2 lb. (1.45 kg) / Unit 27 lb. (12.25 kg) / 8-Unit Master Pack

## Materials of Construction

Adjusting Screw, Springs	Steel
Body, Spring Cage	Zinc
Bottom Plug	Nylon
Innervale	Brass
Seals	Buna N

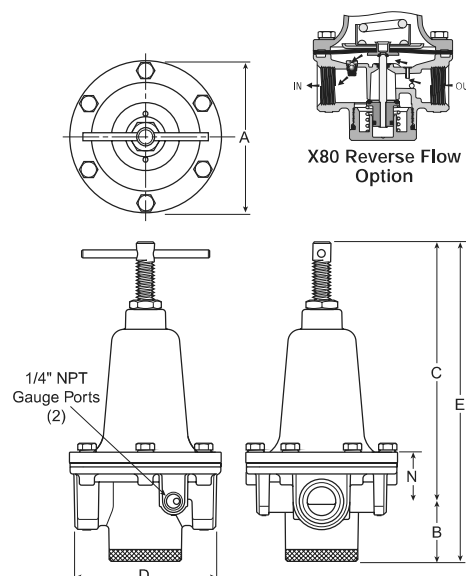
## R119 Standard Regulators

B



### Features

- High Flow Performance Featuring Rugged Design for the Most Demanding Applications
- Ideal for Those Installations Calling for Constant Pressure with Wide Variation in Flow
- Diaphragm Operated Design with Balanced Poppet Design for Quick and Accurate Regulation
- Secondary Aspiration Plus Balanced Poppet Provides Quick Response and Accurate Pressure Regulation
- Heavy Duty Tee Handle Adjustment
- Reverse Flow Version Available
- High Flow: 3/4" - 300 SCFM<sup>§</sup>  
1" - 400 SCFM<sup>§</sup>  
1-1/4" & 1-1/2" - 500 SCFM<sup>§</sup>



Port Size	NPT Relieving	BSPP Relieving
Without Gauge 0-125 PSIG Reduced Pressure		
3/4"	<b>R119-06C</b>	R119G06C
1"	<b>R119-08C</b>	R119G08C
1-1/4"	<b>R119-10C</b>	R119G10C
1-1/2"	<b>R119-12C</b>	R119G12C
With Gauge 0-125 PSIG Reduced Pressure		
3/4"	<b>R119-06CG</b>	—
1"	<b>R119-08CG</b>	—
1-1/4"	<b>R119-10CG</b>	—
1-1/2"	<b>R119-12CG</b>	—

R119 Regulator Dimensions					
A	B	C	D	E	N
<b>R119-06C, R119-08C</b>					
4.69 (119)	1.87 (47)	8.15 (207)	4.38 (111)	10.02 (255)	1.61 (41)
<b>R119-10C, R119-12C</b>					
4.94 (125)	1.81 (46)	8.53 (217)	4.94 (125)	10.34 (263)	1.99 (50.6)

inches  
(mm)

### ⚠ WARNING

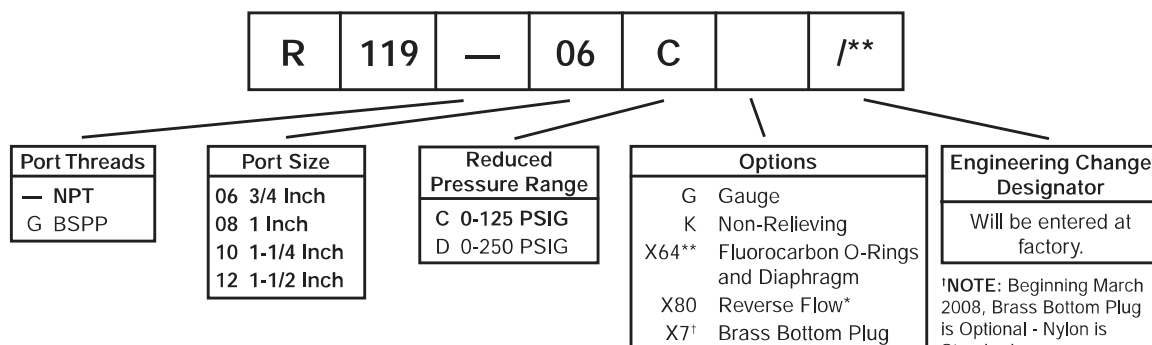
Do not connect regulator to bottled gas.  
Do not exceed maximum primary pressure rating.  
Product rupture can cause serious injury.

Bold Items are Most Popular.

For other models refer to ordering information below.

§ SCFM = Standard cubic feet per minute at 100 PSIG inlet, 75 PSIG no flow secondary setting, and 20 PSIG pressure drop.

## Ordering Information

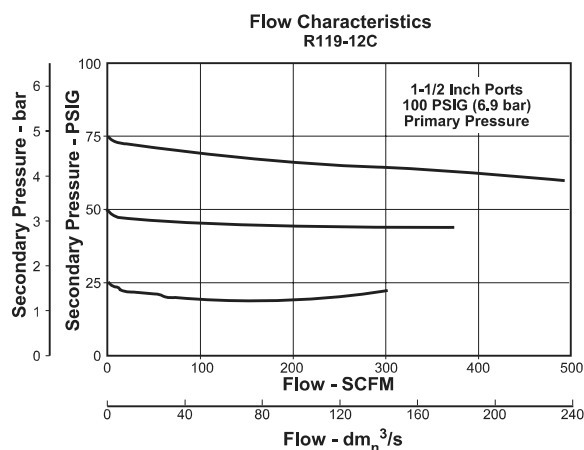
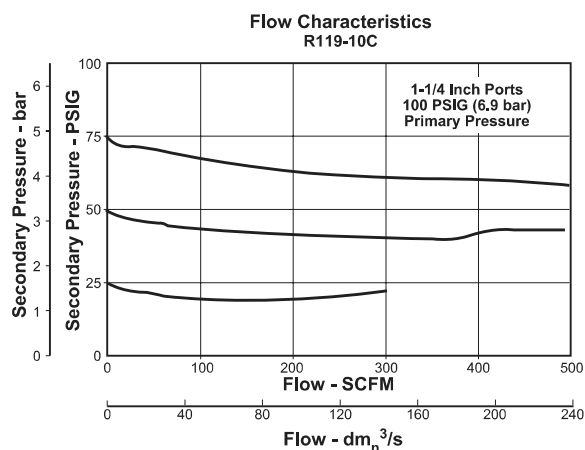
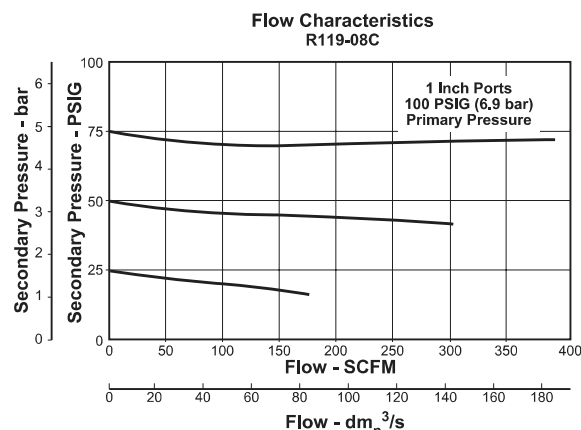
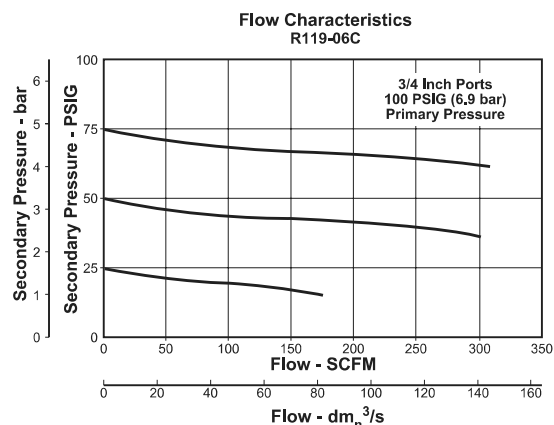


\* Reverse flow for use downstream of control valves.  
† Brass Bottom Plug

BOLD ITEMS ARE MOST POPULAR.



## Technical Information



**B**



### CAUTION:

**REGULATOR PRESSURE ADJUSTMENT** – The working range of knob adjustment is designed to permit outlet pressures within their full range. Pressure adjustment beyond this range is also possible because the knob is not a limiting device. This is a common characteristic of most industrial regulators, and limiting devices may be obtained only by special design. For best performance, regulated pressure should always be set by increasing the pressure up to the desired setting.

## R119 Regulator Kits & Accessories

### Gauges –

- 2" Dial Size, 1/4" Back Connection  
 0 to 60 PSIG (0 to 400 kPa) ..... K4520N14060
- 2" Dial Size, 1/4" Back Connection  
 0 to 160 PSIG (0 to 1100 kPa) ..... K4520N14160
- 2" Dial Size, 1/4" Back Connection  
 0 to 300 PSIG (0 to 2068 kPa) ..... K4520N14300

**Mounting Bracket Kit** ..... 18B57

### Repair Kits –

- Non-Relieving Diaphragm,  
 Valve Assembly (3/4", 1") ..... RK118B
- Non-Relieving Diaphragm,  
 Valve Assembly (1-1/4", 1-1/2") ..... RK118D
- Relieving Diaphragm,  
 Valve Assembly (3/4", 1") ..... RK119B
- Relieving Diaphragm,  
 Valve Assembly (1-1/4", 1-1/2") ..... RK119D

For Fluorocarbon Repair Kits, add X64 to Kit Number suffix.

## Specifications

- Gauge Ports (2) ..... 1/4 Inch
- Port Threads ..... 3/4, 1, 1-1/4, 1-1/2 Inch
- Reduced Pressure Range ..... 2 to 125 PSIG (0.15 to 8.5 bar)
- Supply Pressure ..... 300 PSIG Maximum (20.4 bar)
- Temperature Rating ..... 40°F to 125°F (4.4°C to 52°C)
- Weight –**
  - R119-06, R119-08 ..... 6.2 lb. (2.81 kg) / Unit  
 25 lb. (11.34 kg) / 4-Unit Master Pack
  - R119-10, R119-12 ..... 7.2 lb. (3.27 kg) / Unit  
 29 lb. (13.15 kg) / 4-Unit Master Pack

## Materials of Construction

- Adjusting Screw, Springs ..... Steel
- Body, Spring Cage ..... Zinc
- Bottom Plug ..... Nylon
- Innervalue ..... Brass
- Seals ..... Buna N

