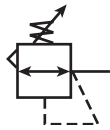
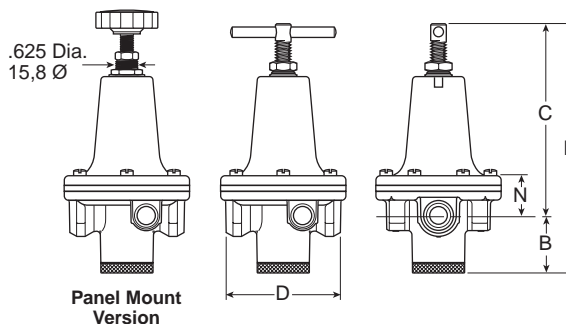
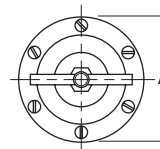
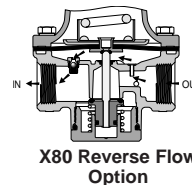


## R119 Standard Regulators



### Features

- High Flow Performance Featuring Rugged Design for the Most Demanding Applications
- Ideal for Those Installations Calling for Constant Pressure with Wide Variation in Flow
- Diaphragm Operated Design with Balanced Poppet Design for Quick and Accurate Regulation
- Secondary Aspiration Plus Balanced Poppet Provides Quick Response and Accurate Pressure Regulation
- Heavy Duty Tee Handle Adjustment
- Reverse Flow Version Available
- Panel Mount Version Available
- High Flow: 1/4" - 100 SCFM<sup>§</sup>  
 3/8" - 110 SCFM<sup>§</sup>  
 1/2" - 150 SCFM<sup>§</sup>



Port Size	NPT Relieving	BSPB Relieving
<b>Without Gauge 0-125 PSIG Reduced Pressure</b>		
1/4"	<b>R119-02C</b>	R119G02C
3/8"	<b>R119-03C</b>	R119G03C
1/2"	<b>R119-04C</b>	R119G04C
<b>With Gauge 0-125 PSIG Reduced Pressure</b>		
1/4"	<b>R119-02CG</b>	—
3/8"	<b>R119-03CG</b>	—
1/2"	<b>R119-04CG</b>	—

R119 Regulator Dimensions					
A	B	C	D	E	N
<b>R119-02C, R119-03C</b>					
3.00 (76)	1.38 (35)	4.60 (117)	2.74 (705)	5.98 (152)	0.96 (24)
<b>R119-04C</b>					
3.56 (90)	1.56 (40)	5.20 (132)	3.25 (83)	6.76 (172)	1.27 (32)

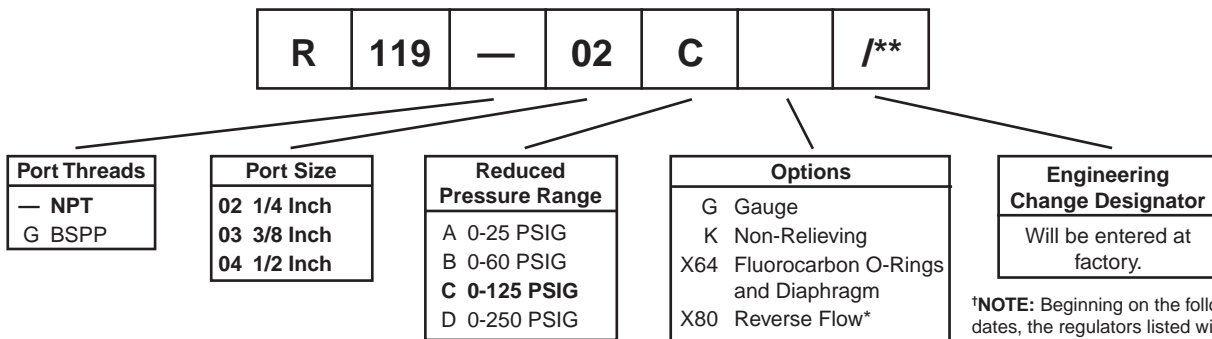
inches  
(mm)

**Bold Items are Most Popular.**

For other models refer to ordering information below.

§ SCFM = Standard cubic feet per minute at 100 PSIG inlet, 75 PSIG no flow secondary setting, and 20 PSIG pressure drop.

### Ordering Information



**\*NOTE:** Beginning on the following dates, the regulators listed will come standard with Nylon Bottom Plugs.

\* Reverse flow for use downstream of control valves.

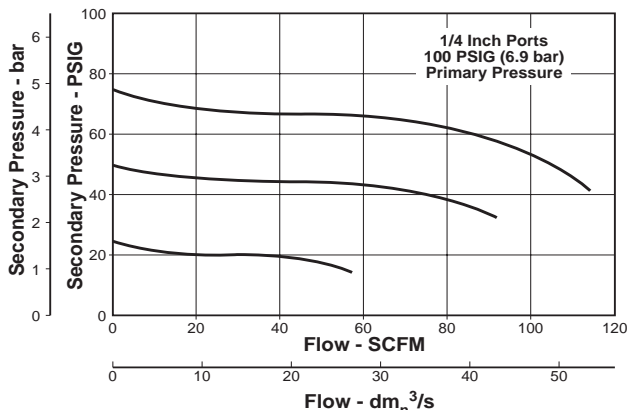
1/4" & 3/8" January 2008  
 1/2" March 2008

**BOLD ITEMS ARE MOST POPULAR.**

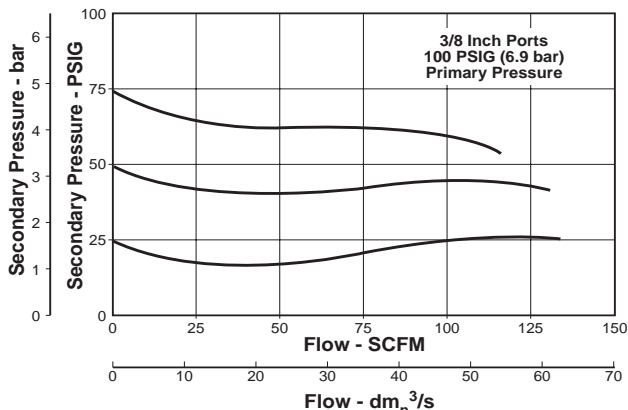


**Technical Information**

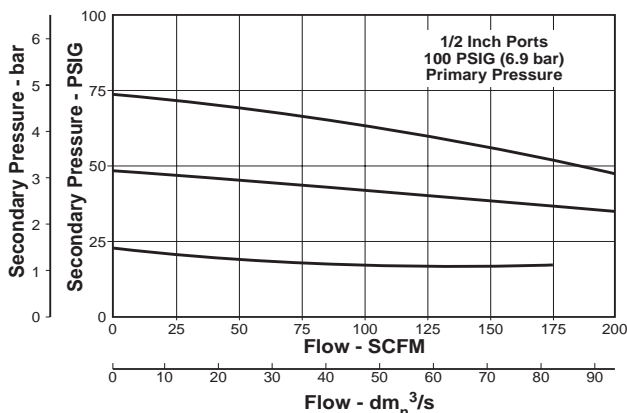
**Flow Characteristics  
 R119-02C**



**Flow Characteristics  
 R119-03C**



**Flow Characteristics  
 R119-04C**



**⚠ WARNING**

**Product rupture can cause serious injury.  
 Do not connect regulator to bottled gas.  
 Do not exceed maximum primary pressure rating.**

**⚠ CAUTION:**

**REGULATOR PRESSURE ADJUSTMENT** – The working range of knob adjustment is designed to permit outlet pressures within their full range. Pressure adjustment beyond this range is also possible because the knob is not a limiting device. This is a common characteristic of most industrial regulators, and limiting devices may be obtained only by special design. For best performance, regulated pressure should always be set by increasing the pressure up to the desired setting.

**R119 Regulator Kits & Accessories**

**Gauges –**

- 2" Dial Size, 1/4" Back Connection  
 0 to 60 PSIG (0 to 400 kPa) ..... K4520N14060
- 2" Dial Size, 1/4" Back Connection  
 0 to 160 PSIG (0 to 1100 kPa) ..... K4520N14160
- 2" Dial Size, 1/4" Back Connection  
 0 to 300 PSIG (0 to 2068 kPa) ..... K4520N14300

**Mounting Bracket Kit –**

- 1/4", 3/8" ..... SA15Y57
- 1/2" ..... 18A57

**Panel Mount Conversion Kit –**

- 1/4", 3/8" ..... 4202
- 1/2" ..... 4204

**Repair Kits –**

- Non-Relieving Diaphragm,  
 Valve Assembly (1/4", 3/8"; All PSIG) ..... RK118Y
- Relieving Diaphragm,  
 Valve Assembly (1/4", 3/8"; All PSIG) ..... RK119Y
- Non-Relieving Diaphragm,  
 Valve Assembly (1/2"; 25, 60, 125 PSIG) ..... RK118A
- Non-Relieving Diaphragm,  
 Valve Assembly (1/2"; 250 PSIG) ..... RK118A250
- Relieving Diaphragm,  
 Valve Assembly (1/2"; 25, 60, 125 PSIG) ..... RK119A

- Relieving Diaphragm,  
 Valve Assembly (1/2"; 250 PSIG) ..... RK119A250

For Fluorocarbon Repair Kits, add X64 to Kit Number suffix.

**Specifications**

- Gauge Ports (2)** ..... 1/4 Inch
- Port Threads** ..... 1/4, 3/8, 1/2 Inch
- Reduced Pressure Range** ..... 2 to 125 PSIG (0.15 to 8.5 bar)
- Supply Pressure** ..... 300 PSIG Maximum (20.4 bar)
- Temperature Rating** ..... 40°F to 125°F (4.4°C to 52°C)
- Weight –**
- R119-02, R119-03 ..... 1.8 lb. (0.82 kg) / Unit  
 26 lb. (11.79 kg) / 12-Unit Master Pack
- R119-04 ..... 3.2 lb. (1.45 kg) / Unit  
 27 lb. (12.25 kg) / 8-Unit Master Pack

**Materials of Construction**

- Adjusting Screw, Springs** ..... Steel
- Body, Spring Cage** ..... Zinc
- Bottom Plug** ..... Nylon
- Innervalve** ..... Brass
- Seals** ..... Buna N

